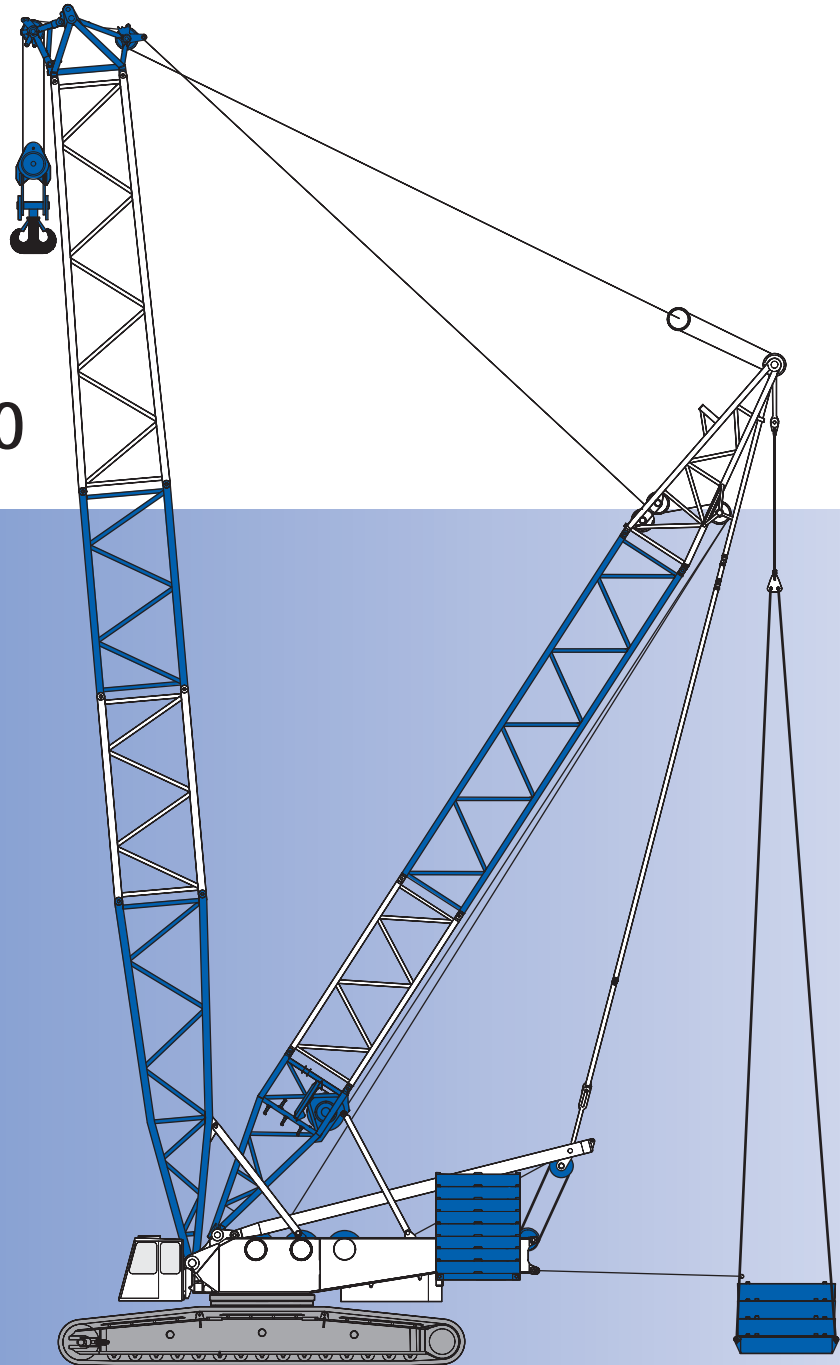


Demag CC 2800



600t

[MAIN MENUE](#)

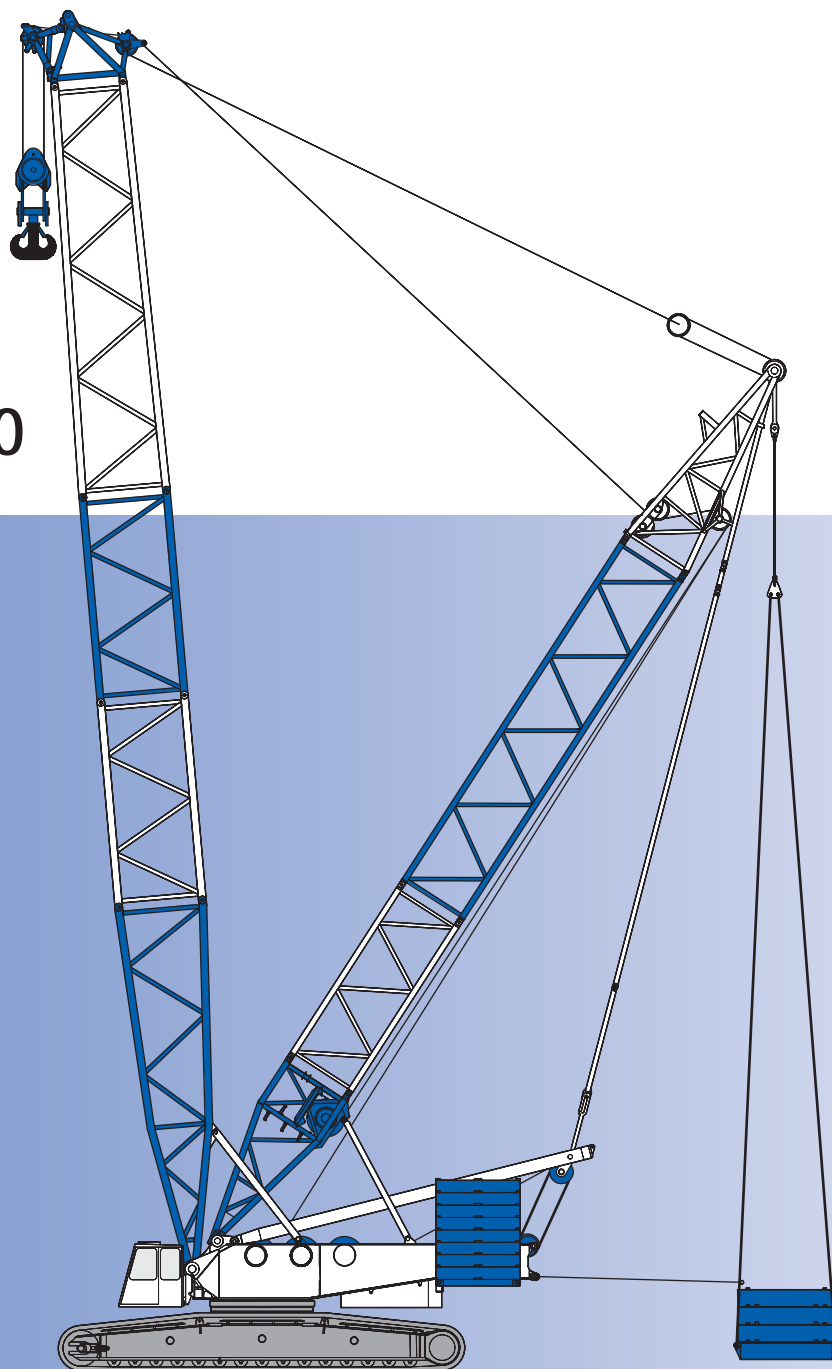
[Inhalt](#)

[Contents](#)

[Contenu](#)

- Highlights
- Contents
- Key
- Specifications
- Boom combinations
- Main boom
- Technical description

Demag CC 2800



MAIN MENUE

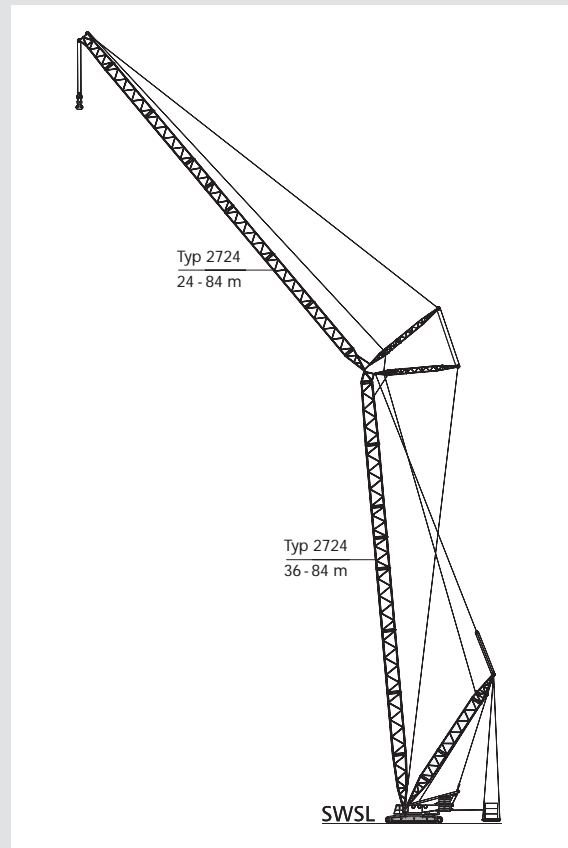
Inhalt

Contents

Contenu

Demag CC 2800

- ▶ 600 t lifting capacity at 7 m radius
 - ▶ excellent lifting capacities throughout the whole working range
 - ▶ very simple assembly and short rigging time
 - ▶ transport weights reduced to max. 40 t
-
- ▶ 600 t Tragkraft bei 7 m Ausladung
 - ▶ hervorragende Traglasten über alle Arbeitsbereiche
 - ▶ enorm vereinfachte Montage und kürzeste Rüstzeiten
 - ▶ Reduzierung der Transportgewichte < 40 t je Einzelkomponente
-
- ▶ capacité de levage 600 t à 7 m de portée
 - ▶ excellentes capacités de levage dans toutes les utilisations
 - ▶ assemblage considérablement simplifié et temps de montage minimal
 - ▶ poids de transport réduit à max. 40 t



WWW. demag24.com

Contents

Inhalt

Contenu

Page · Seite:

Specifications · Technische Daten · Caractéristiques

Specifications · Technische Daten · Caractéristiques	4
Boom combinations · Ausleger-Kombinationen · Combinaisons de flèche	8
Specifications · Technische Daten · Caractéristiques	10

Main boom · Hauptausleger · Flèche principale

Working ranges · Arbeitsbereiche · Portées (SH)	11
Lifting capacities · Tragfähigkeiten · Capacités de levage (SH)	12
Lifting capacities with Superlift · Tragfähigkeiten mit Superlift · Capacités de levage avec Superlift (SSL)	14
Working ranges with Superlift · Arbeitsbereiche mit Superlift · Portées avec Superlift (SSL)	20

Technical description · Technische Beschreibung · Descriptif technique

Crawler carrier · Superstructure · Optional equipment	54
Boom configurations S and L	55
Raupenunterwagen · Oberwagen · Zusatzausrüstung	56
Auslegervarianten S und L	57
Châssis à chenilles · Partie tournante · Equipement optionnel	58
Configurations de flèche S et L	59

Transport example for CC 2800

Transportbeispiel CC 2800 · Exemple de transport pour la CC 2800	60
--	----

[MAIN MENU](#)

[Inhalt](#)

[Contents](#)

[Contenu](#)

Specifications

Technische Daten

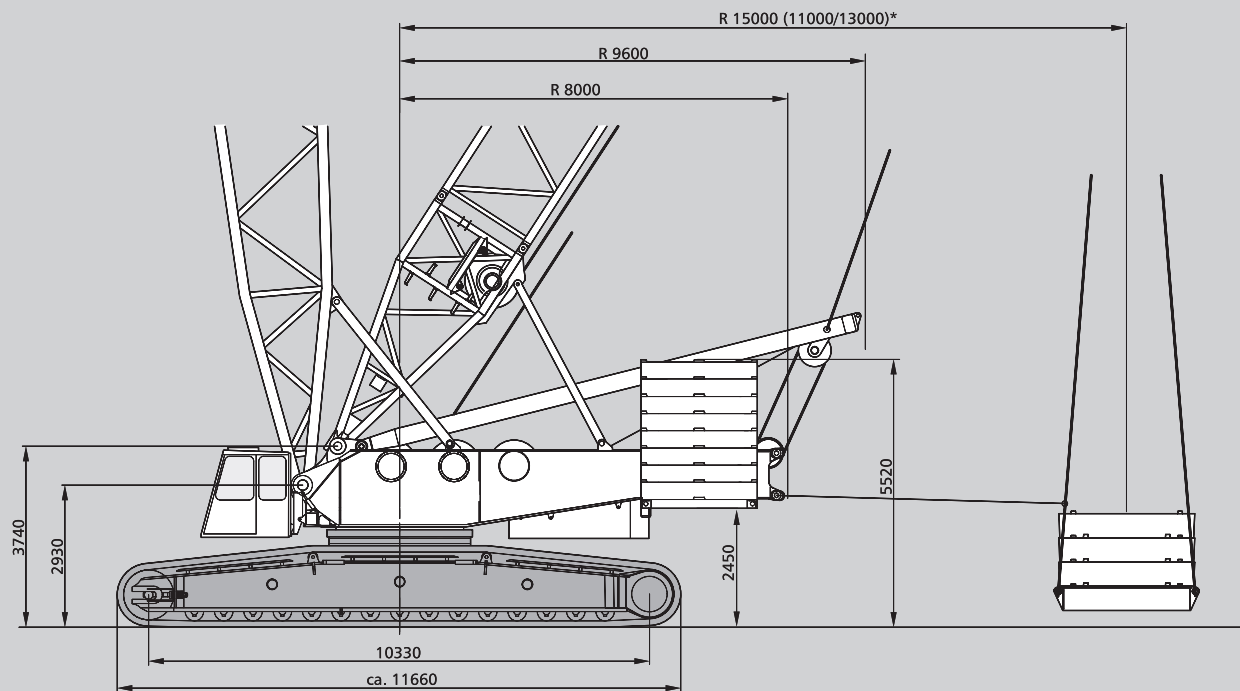
Caractéristiques

Working speeds (infinitely variable)
 Arbeitsgeschwindigkeiten (stufenlos regelbar)
 Vitesses de travail (réglables sans paliers)

Mechanisms Antriebe Mécanismes	Speeds ¹⁾ Geschwindigkeiten ¹⁾ Vitesses ¹⁾	Single line pull Seilzug je Strang Effort sur brin simple	Length of hoist rope Länge des Hubseils Longueur du câble de levage
Hoist 1 Hubwerk 1 Treuil de levage 1	max. 120 m / min	158 kN / 141 kN ²⁾	900 m
Hoist 2 Hubwerk 2 Treuil de levage 2	max. 120 m / min	158 kN / 141 kN ²⁾	900 m
Boom derricking Wippwerk Hauptausleger Variation de flèche	max. 120 m / min		
Boom hoist Einziehwerk Relevage de flèche	max. 52 m / min		
Fly jib hoist Wippwerk Hilfsausleger Variation de volée	max. 120 m / min		
Slewing (RPM) Drehwerk (U/min) Orientation (tr/mn)	0,7		

1) top layer · oberste Lage · couche supérieure

2) without / with reeving effect considered · Angabe ohne / mit Wirkungsgrad der Einscherung · sans / avec effort de mouflage



*optional
 *Option
 *option

[MAIN MENUE](#)

[Inhalt](#)

[Contents](#)

[Contenu](#)

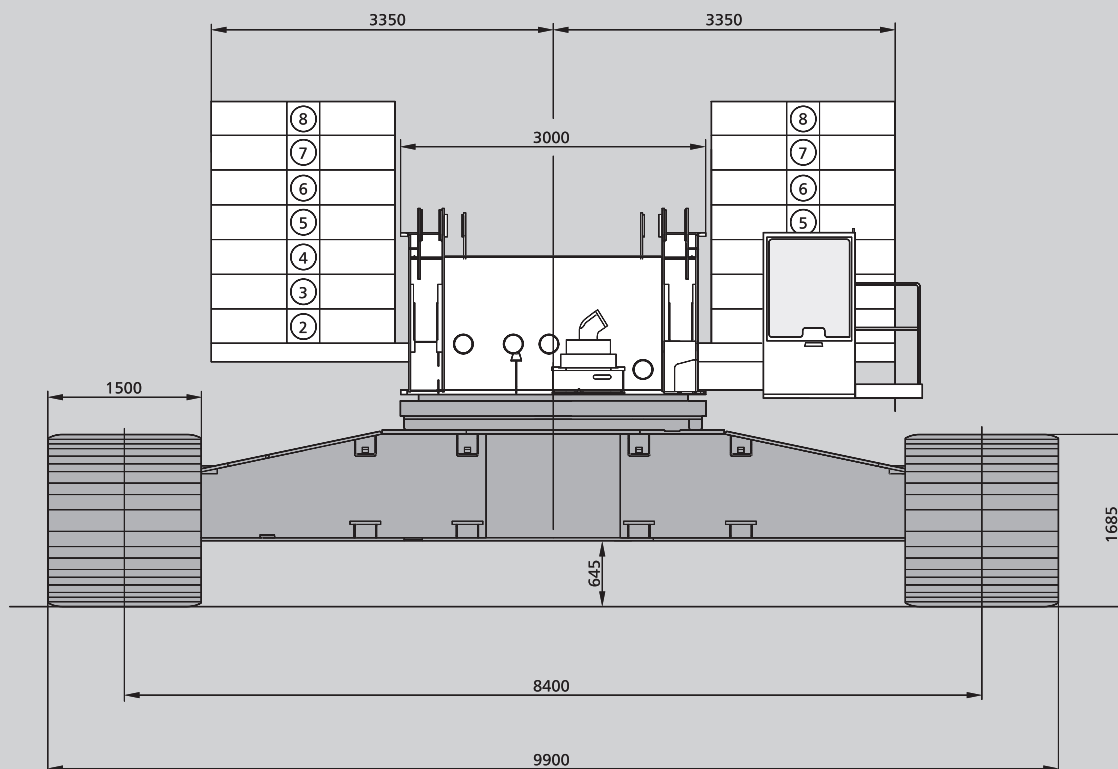
Hook blocks
Unterflaschen
Crochets

Type Typ Type	Possible load Mögliche Traglast Charge possible	Number of sheaves Anzahl der Rollen Nombre de poulies	Number of lines Strangzahl Nombre de brins	Weight Gewicht Poids	„D“
2 x 300 t ¹⁾	600 t	2 x 11	2 x 22	11 500 kg	5,00 m
2 x 200 t ¹⁾	400 t	2 x 7	2 x 14	10 000 kg	4,80 m
100 t	100 t	3	7	3 600 kg	4,30 m
50 t	48 t	1	3	2 800 kg	4,00 m
16 t	16 t	-	1	900 kg	3,00 m

¹⁾ The double hook blocks can be converted into single hook blocks
Die Doppelunterflaschen können in Einzelunterflaschen umgebaut werden
Les crochets bimoufles peuvent être transformés en crochets simples

Carrier performance
Fahrleistungen
Performances du porteur

1 st gear 1. Gang 1 ^{ère} vitesse	0-0,6 km/h
2 nd gear 2. Gang 2 ^{ème} vitesse	0-1,2 km/h



[MAIN MENU](#)

[Inhalt](#)

[Contents](#)

[Contenu](#)

Specifications

Technische Daten

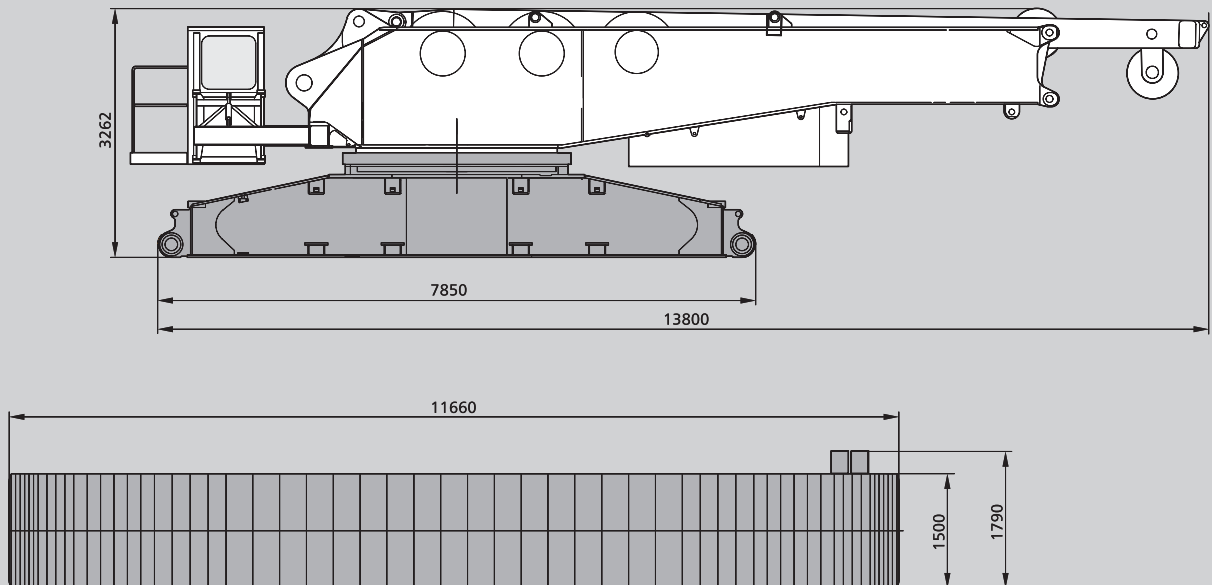
Caractéristiques

Weights Gewichte Poids

Total weight incl. counterweight 160 t, 24 m SH boom and hook block Gesamtgewicht einschl. Gegengewicht 160 t, 24 m Hauptausleger SH und Unterflasche Poids total avec contrepoids 160 t, flèche SH 24 m et crochet-moufle	360 t
Superstructure (with three drums, A-frame, reeving drum and boom backstops) Oberwagen (mit drei Winden, A-Bock, Einscherwinde und Rückfallzylinder) Partie supérieure (avec trois treuils, chevalet, tambour de mouflage et retenues de flèche)	55 t
Superstructure (without drums H1/H2, reeving winch, boom backstops and A-frame) incl. part of quick-connection Oberwagen (ohne Winden H1/H2, Einscherwinde, Rückfallzylinder und A-Bock) und Anteil Quick-Connection Partie supérieure (sans treuils H1/H2, tambour de mouflage, retenues de flèche et chevalet) incl. partie de connexion rapide	36,8 t
Carbody / Carbody with assembly jacks Mittelstück / Mittelstück mit Montageabstützung Partie centrale / Partie centrale avec vérins de montage	26 / 28 t
Crawlers Raupen Chenilles	2 x 40 t
Counterweight Gegengewicht Contrepoids	160 t

Ground pressure Bodendruck Pression au sol

Ground pressure, based on 360 t total weight Bodendruck bei 360 t Gesamtgewicht Pression au sol, avec un poids total de 360 t	14 N/cm ²
---	----------------------



[MAIN MENU](#)

[Inhalt](#)

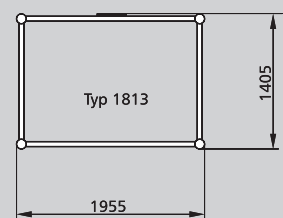
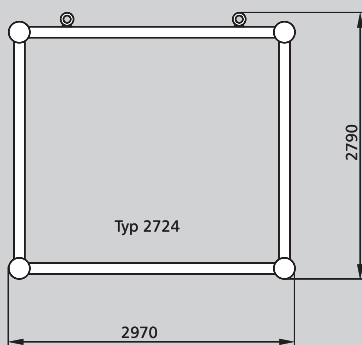
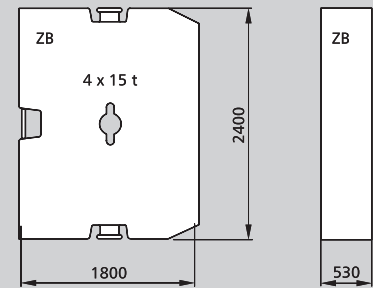
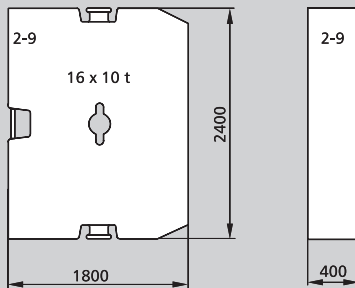
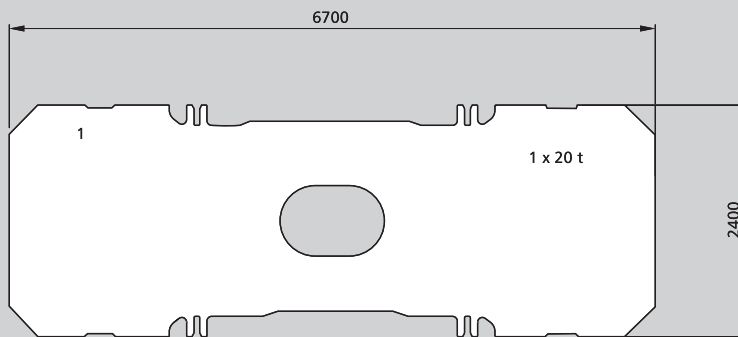
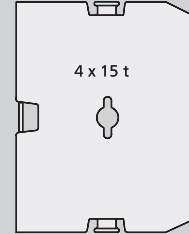
[Contents](#)

[Contenu](#)

Counterweights on upper
Gegengewichte OW
Contrepoids sur partie
tournante



Central ballast (CB)
Zentralballast (ZB)
Lest central (ZB)



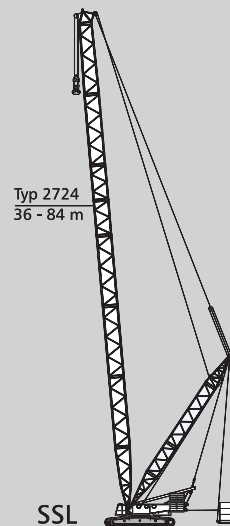
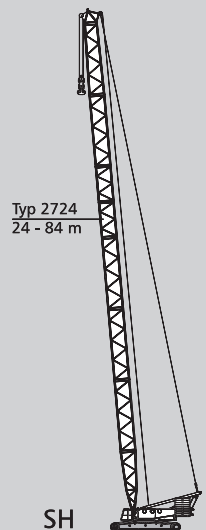
[MAIN MENU](#)

[Inhalt](#)

[Contents](#)

[Contenu](#)

Boom combinations Ausleger-Kombinationen Combinaisons de flèche



[MAIN MENUE](#)

[Inhalt](#)

[Contents](#)

[Contenu](#)

Specifications

Technische Daten

Caractéristiques

Erection / lowering of the CC 2800 boom systems to the ground
 Aufrichten / Ablegen der CC 2800 Auslegersysteme
 Montée / placement sur sol des systèmes de flèche de la CC 2800

Version Variante Version	Main boom Hauptausleger Flèche principale m	Fly jib Hilfsausleger Fléchette m	Counterweight Gegengewicht Contrepoids t	Central ballast Zentralballast Lest central t	Remarks Bemerkungen Observations
SH	24 – 72 78 – 84 **	–	180	60	
SSL	36 – 84	–	–	–	with SL-counterweight mit SL-Gegengewicht avec contrepoids SL

Remarks · Bemerkungen · Remarques

All versions without runner!
 Alle Varianten ohne Runner!
 Toutes les versions sans runner!

Further details on request!
 Weitere Angaben auf Anfrage!
 Plus amples détails sur demande!

Erection over idler wheel for all versions!
 Alle Varianten Aufrichten über Leitrad!
 Montage par dessus le barbotin pour toutes les versions!

** Only with assist crane or auxiliary equipment

** Nur mit Hilfskran oder Zusatzausrüstung

** Uniquement avec grue auxiliaire ou autre équipement auxiliaire

[MAIN MENU](#)

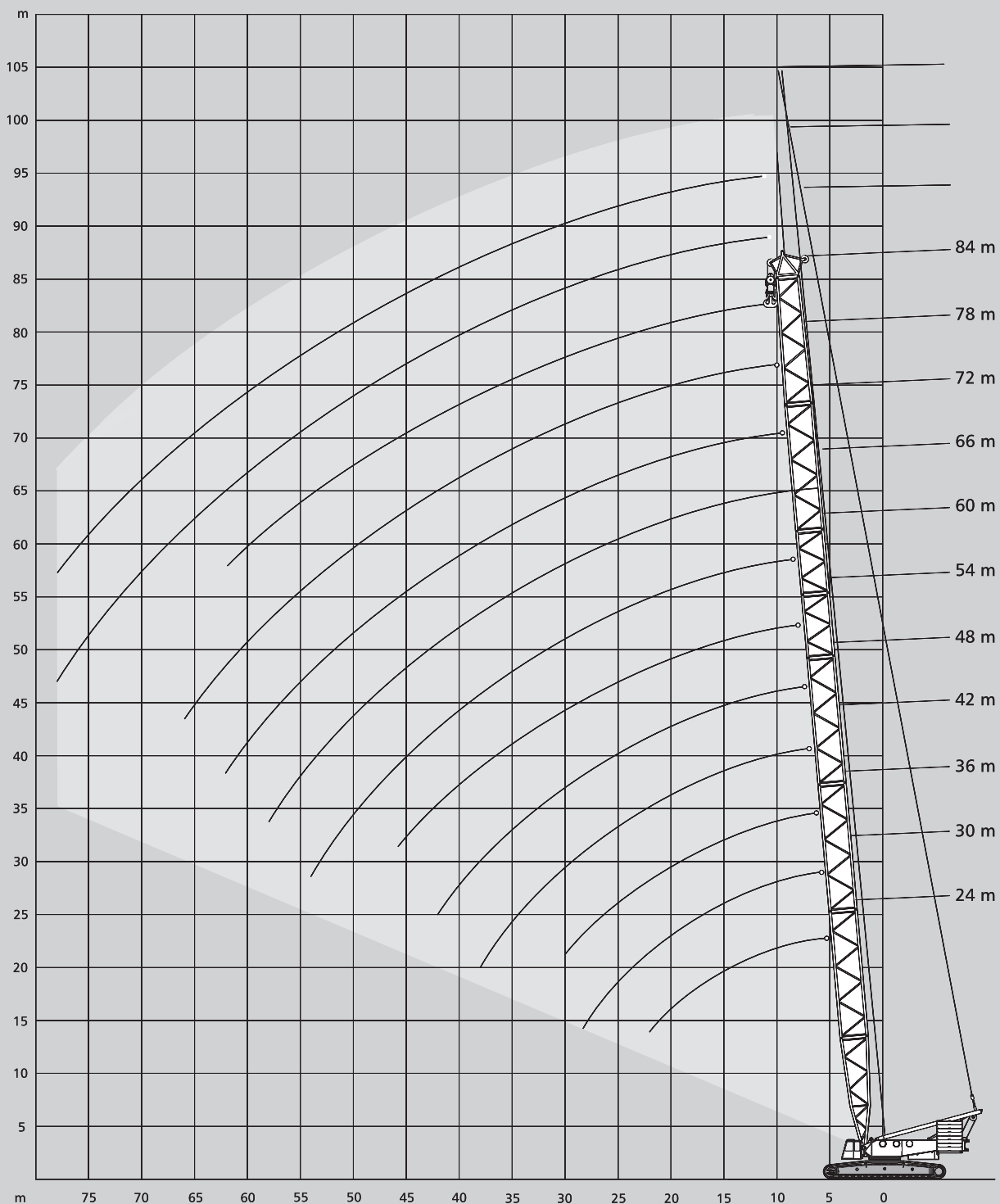
[Inhalt](#)

[Contents](#)

[Contenu](#)

Working ranges main boom Arbeitsbereiche Hauptausleger Portées flèche principale

SH



[MAIN MENUE](#)

[Inhalt](#)

[Contents](#)

[Contenu](#)

Lifting capacities main boom

Tragfähigkeiten Hauptausleger

Capacités de levage flèche principale

180 t + 60 t ZB  8,40 m 360° DIN/ISO

Radius Ausladung Portée		Main boom · Hauptausleger · Flèche principale										
m		24,0	30,0	36,0	42,0	48,0	54,0	60,0	66,0	72,0	78,0	84,0
t		t	t	t	t	t	t	t	t	t	t	t
	6	600,0	-	-	-	-	-	-	-	-	-	-
	7	573,0	570,0	567,0	-	-	-	-	-	-	-	-
	8	506,0	503,0	499,0	497,0	494,0	-	-	-	-	-	-
	9	405,0	404,0	402,0	401,0	400,0	400,0	399,0	-	-	-	-
	10	333,0	331,0	330,0	328,0	327,0	327,0	326,0	325,0	301,0	-	-
	12	244,0	242,0	240,0	239,0	237,0	237,0	236,0	235,0	235,0	234,0	212,0
	14	191,0	189,0	187,0	186,0	184,0	184,0	183,0	182,0	181,0	181,0	179,0
	16	156,0	154,0	153,0	151,0	149,0	149,0	147,0	147,0	146,0	145,0	144,0
	18	132,0	130,0	128,0	126,0	125,0	124,0	122,0	122,0	121,0	120,0	119,0
	20	113,0	111,0	109,0	108,0	106,0	105,0	104,0	103,0	102,0	101,0	100,0
	22	99,0	97,0	95,0	93,0	92,0	91,0	89,0	89,0	88,0	87,0	85,0
SH	24	-	86,0	84,0	82,0	80,0	79,0	78,0	77,0	76,0	75,0	74,0
	26	-	77,0	75,0	73,0	71,0	70,0	69,0	68,0	67,0	66,0	64,0
	28	-	70,0	67,0	65,0	63,0	62,0	61,0	60,0	59,0	58,0	56,0
	30	-	-	61,0	59,0	57,0	56,0	54,0	53,0	52,0	52,0	50,0
	34	-	-	-	49,0	47,0	45,0	44,0	43,0	42,0	41,0	39,0
	38	-	-	-	41,0	39,0	38,0	36,0	35,0	33,0	32,0	30,0
	42	-	-	-	-	33,0	32,0	30,0	28,0	27,0	26,0	24,0
	46	-	-	-	-	-	27,0	24,0	23,0	22,0	20,0	18,0
	50	-	-	-	-	-	-	20,0	19,0	17,0	16,0	14,0
	54	-	-	-	-	-	-	-	17,0	16,0	14,0	13,0
58	-	-	-	-	-	-	-	-	13,0	11,0	10,0	
62	-	-	-	-	-	-	-	-	-	9,0	7,0	
66	-	-	-	-	-	-	-	-	-	-	5,0	
70	-	-	-	-	-	-	-	-	-	-	-	

160 t  8,40 m 360° DIN/ISO

Radius Ausladung Portée		Main boom · Hauptausleger · Flèche principale										
m		24,0	30,0	36,0	42,0	48,0	54,0	60,0	66,0	72,0	78,0	84,0
t		t	t	t	t	t	t	t	t	t	t	t
	6	427,0	-	-	-	-	-	-	-	-	-	-
	7	406,0	446,0	487,0	-	-	-	-	-	-	-	-
	8	388,0	425,0	423,0	422,0	422,0	-	-	-	-	-	-
	9	334,0	333,0	331,0	330,0	329,0	329,0	328,0	-	-	-	-
	10	274,0	272,0	271,0	269,0	268,0	268,0	267,0	267,0	264,0	-	-
	12	200,0	198,0	197,0	195,0	194,0	193,0	192,0	192,0	191,0	190,0	189,0
	14	156,0	154,0	153,0	151,0	150,0	149,0	148,0	147,0	146,0	146,0	144,0
	16	127,0	126,0	124,0	122,0	121,0	120,0	119,0	118,0	117,0	116,0	115,0
	18	107,0	105,0	103,0	101,0	100,0	99,0	98,0	97,0	96,0	96,0	94,0
SH	20	92,0	90,0	88,0	86,0	84,0	83,0	82,0	82,0	81,0	80,0	78,0
	22	80,0	78,0	76,0	74,0	73,0	72,0	70,0	69,0	69,0	68,0	66,0
	24	-	69,0	67,0	65,0	63,0	62,0	61,0	60,0	59,0	58,0	57,0
	26	-	61,0	59,0	57,0	55,0	54,0	53,0	52,0	51,0	50,0	49,0
	28	-	55,0	53,0	51,0	49,0	48,0	47,0	46,0	45,0	44,0	42,0
	30	-	-	48,0	46,0	44,0	42,0	41,0	40,0	39,0	38,0	36,0
	34	-	-	-	37,0	35,0	34,0	32,0	31,0	30,0	29,0	27,0
	38	-	-	-	31,0	29,0	27,0	25,0	24,0	23,0	22,0	20,0
	42	-	-	-	-	24,0	22,0	20,0	19,0	17,0	16,0	14,0
	46	-	-	-	-	-	18,0	16,0	14,0	13,0	12,0	10,0
50	-	-	-	-	-	-	13,0	11,0	9,0	8,0	6,0	
54	-	-	-	-	-	-	-	10,0	8,0	7,0	5,0	
58	-	-	-	-	-	-	-	-	6,0	-	-	
62	-	-	-	-	-	-	-	-	-	-	-	

[MAIN MENUE](#)

[Inhalt](#)

[Contents](#)

[Contenu](#)

Lifting capacities main boom with Superlift Tragfähigkeiten Hauptausleger mit Superlift Capacités de levage flèche principale avec Superlift


180 t + 60 t ZB 


8,40 m 

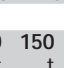
SL-Radius 15 m 


360° 

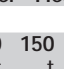
DIN/ISO 

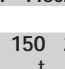
36 m Main boom · Hauptausleger · Flèche principale									
Radius Ausladung Portée									
	t	0	50	100	150	200	250	300	325
m	t	t	t	t	t	t	t	t	t
7	576	600	600	-	-	-	-	-	600
8	502	571	580	586	-	-	-	-	600
9	424	510	562	573	586	-	-	-	600
10	352	451	512	559	576	-	-	-	595
12	257	347	420	472	516	548	-	-	548
14	201	272	344	400	443	480	495	-	495
16	164	221	282	339	385	420	441	-	441
18	137	188	239	290	334	373	389	-	389
20	118	162	206	251	294	330	340	-	340
22	103	142	181	221	260	295	300	-	300
24	91	126	161	197	232	267	268	-	268
26	81	113	145	177	209	242	244	-	244
28	73	102	132	161	191	220	222	-	222
30	66	93	120	148	175	196	196	-	196

54 m Main boom · Hauptausleger · Flèche principale									
Radius Ausladung Portée									
	t	0	50	100	150	200	250	300	325
m	t	t	t	t	t	t	t	t	t
9	424	504	518	518	-	-	-	-	518
10	349	452	506	514	518	-	-	-	518
12	253	343	420	466	505	518	-	-	518
14	197	268	340	398	437	474	497	-	497
16	160	219	278	337	381	414	438	-	438
18	133	184	235	286	332	367	389	-	389
20	114	158	202	247	291	327	348	-	348
22	98	138	177	216	256	292	314	-	314
24	86	122	157	192	228	263	285	-	285
26	76	108	141	173	205	237	262	-	262
28	68	98	127	156	186	215	242	-	242
30	61	88	115	143	170	197	224	-	224
34	50	74	97	121	144	168	191	-	193
38	42	63	83	104	125	146	165	-	165
42	36	54	73	91	110	128	142	-	142
46	31	48	64	81	98	115	124	-	124

42 m Main boom · Hauptausleger · Flèche principale									
Radius Ausladung Portée									
	t	0	50	100	150	200	250	300	325
m	t	t	t	t	t	t	t	t	t
8	501	569	577	580	-	-	-	-	585
9	423	508	555	564	574	-	-	-	585
10	350	450	510	550	567	-	-	-	585
12	255	345	419	470	513	546	-	-	546
14	199	270	342	398	440	478	478	-	478
16	162	221	281	338	384	418	421	-	421
18	136	186	237	288	333	371	375	-	375
20	116	160	205	249	293	329	337	-	337
22	101	140	180	219	258	293	306	-	306
24	89	124	160	195	230	265	280	-	280
26	79	111	143	175	207	240	257	-	257
28	71	100	130	159	189	218	236	-	236
30	64	91	118	146	173	200	216	-	216
34	53	77	100	124	147	171	179	-	179
38	46	66	87	108	129	144	-	-	144

60 m Main boom · Hauptausleger · Flèche principale									
Radius Ausladung Portée									
	t	0	50	100	150	200	250	300	325
m	t	t	t	t	t	t	t	t	t
9	425	457	459	462	-	-	-	-	465
10	348	452	459	462	-	-	-	-	465
12	252	342	420	442	455	-	-	-	465
14	196	267	339	397	435	465	-	-	465
16	159	218	277	337	379	412	423	-	423
18	132	183	234	284	331	365	377	-	377
20	112	157	201	245	290	327	338	-	338
22	97	136	176	215	254	291	306	-	306
24	85	120	156	191	226	262	278	-	278
26	75	107	139	171	203	236	255	-	255
28	67	96	126	155	184	214	235	-	235
30	60	87	114	141	168	196	219	-	219
34	49	72	96	119	143	166	190	-	193
38	40	61	82	103	123	144	165	-	170
42	34	53	71	90	108	127	145	-	150
46	28	46	62	79	96	113	129	-	132
50	24	40	55	71	86	101	114	-	114
54	21	36	50	64	78	92	97	-	97

48 m Main boom · Hauptausleger · Flèche principale									
Radius Ausladung Portée									
	t	0	50	100	150	200	250	300	325
m	t	t	t	t	t	t	t	t	t
8	501	540	544	548	-	-	-	-	558
9	423	505	544	548	-	-	-	-	558
10	349	451	508	534	545	-	-	-	558
12	254	344	419	467	511	555	-	-	558
14	198	269	341	398	438	476	487	-	487
16	161	220	279	337	383	416	425	-	425
18	134	185	236	286	332	369	375	-	375
20	115	159	203	248	292	328	335	-	335
22	99	139	178	217	257	292	303	-	303
24	87	123	158	193	229	264	277	-	277
26	77	110	142	174	206	238	256	-	256
28	69	99	128	157	187	216	238	-	238
30	62	90	117	144	171	198	221	-	221
34	52	75	99	122	146	169	190	-	190
38	43	64	85	106	126	147	162	-	162
42	37	56	74	93	111	130	134	-	134

66 m Main boom · Hauptausleger · Flèche principale									
Radius Ausladung Portée									
	t	0	50	100	150	200	250	300	325
m	t	t	t	t	t	t	t	t	t
10	347	394	399	404	-	-	-	-	411
12	252	342	381	392	403	-	-	-	411
14	195	267	338	380	397	411	-	-	411
16	158	217	277	336	378	404	404	-	404
18	131	182	233	284	331	364	367	-	367
20	112	156	200	245	289	326	334	-	334
22	96	136	175	214	254	291	305	-	305
24	84	119	155	190	226	261	280	-	280
26	74	106	138	170	203	235	258	-	258
28	66	95	125	154	184	213	238	-	238
30	59	86	113	140	167	195	221	-	221
34	48	71	95	118	142	165	189	-	193
38	39	60	81	102	122	143	164	-	169
42	33	51	70	89	107	126	144	-	149
46	27	45	61	78	95	112	128	-	133
50	23	39	54	69	85	100	115	-	119
54	19	34	48	62	76	91	104	-	104
58	16	30	44	57	70	83	90	-	90

[MAIN MENUE](#)

[Inhalt](#)

[Contents](#)

[Contenu](#)

Notes to lifting capacity

Anmerkungen zu den Tragfähigkeiten

Conditions d'utilisation

Ratings are in compliance with ISO 4305 and DIN 15019.2 (test load = 1.25 x suspended load + 0.1 x dead weight of boom, reduced to boom point).

Weight of hook blocks and slings is part of the load, and is to be deducted from the capacity ratings.

Crane operation is permissible up to a

wind pressure of 60 N/m²

wind speed of 9.8 m/s

Consult operation manual for further details on wind speed.

Machine must be on firm and level ground to utilize max. tabulated ratings. Boom lengths and load must be reduced in case of out-of-level conditions or travel on uneven ground.

Note: Data published herein is intended as a guide only and shall not be construed to warrant applicability for lifting purposes.

Crane operation is subject to the computer charts and operation manual both supplied with the crane.

Tragfähigkeiten entsprechen ISO 4305 und DIN 15019.2 (Prüflast = 1,25 x Hublast + 0,1 x Auslegereigengewicht, auf die Auslegerspitze reduziert).

Das Gewicht der Unterflaschen sowie die Aufnahmemittel sind Bestandteile der Last und sind von den Tragfähigkeiten abzuziehen.

Kranbetrieb zulässig bis

Staudruck 60 N/m²

Windgeschwindigkeit 9,8 m/s

Weitere Angaben über Windgeschwindigkeiten sind der Bedienungsanleitung des Kranes zu entnehmen.

Die Ausnutzung der maximalen Tragfähigkeit nach der Tabelle setzt eine völlig ebene und tragfähige Aufstandsfläche voraus.

Bei Schräglage und Fahren über unebenes Gelände sind Auslegerlängen und Last zu reduzieren.

Anmerkung: Die Daten dieser Broschüre dienen nur zur allgemeinen Information; für ihre Richtigkeit übernehmen wir keine Haftung.

Der Betrieb des Kranes ist nur mit den Original-Tragfähigkeitstabellen und mit der Bedienungsanleitung zulässig, die mit dem Kran mitgeliefert werden.

Le tableau de charges est conforme à la norme ISO 4305 et DIN 15019.2 (charge d'essai = 1,25 x charge suspendue + 0,1 x poids mort de la flèche, réduit à la pointe de flèche).

Les poids du crochet-moufle et de tous les accessoires d'élingage font partie de la charge et sont à déduire des charges indiquées.

La grue peut travailler jusqu'à une

pression du vent de 60 N/m²

vitesse du vent de 9,8 m/s

Pour plus de détails sur les vitesses du vent consulter la notice d'utilisation de la grue.

L'utilisation de la capacité maxi nécessite une opération sur sol ferme et horizontal. En cas de travail sous un dévers ou en cas de déplacements dans un terrain irrégulier, les longueurs de flèche et les charges maxima admissibles sont à réduire.

Nota: Les renseignements ci-inclus sont donnés à titre indicatif et ne représentent aucune garantie d'utilisation pour les opérations de levage. La mise en service de la grue n'est autorisée qu'à condition que les tableaux de charges ainsi que le manuel de service, tels que fournis avec la grue, soient observés.

[MAIN MENU](#)

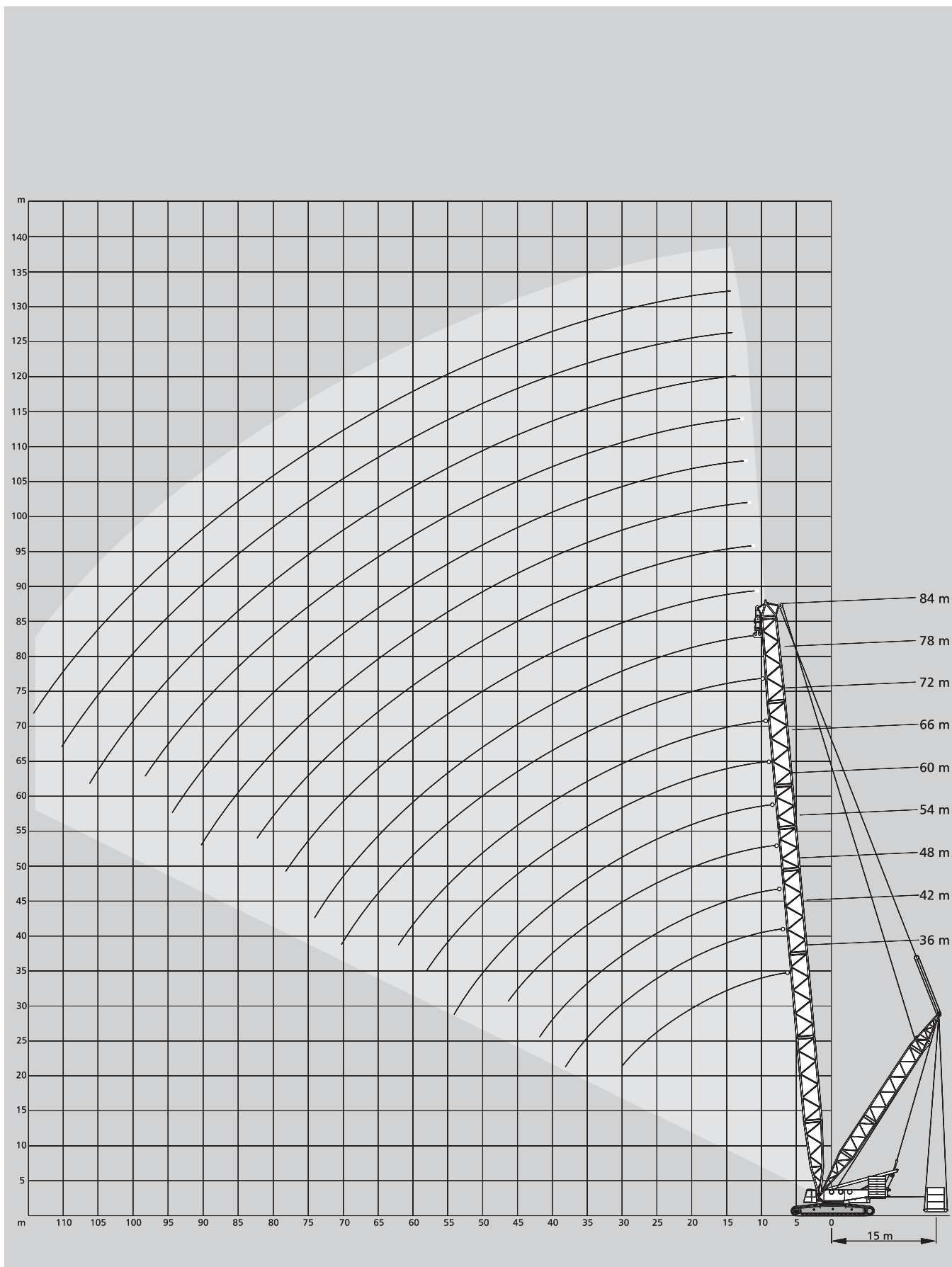
[Inhalt](#)

[Contents](#)

[Contenu](#)

Working ranges main boom with Superlift Arbeitsbereiche Hauptausleger mit Superlift Portées de flèche principale avec Superlift

SSL




[MAIN MENUE](#)

[Inhalt](#)


[Contents](#)

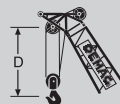
[Contenu](#)

Key Zeichenerklärung Légende

 Track · Spur · Voie

 Counterweight · Gegengewicht · Contrepoids

 Superlift counterweight · Superlift-Gegengewicht · Contrepoids Superlift

„D“


S: heavy · schwer · lourd

H: Main boom · Hauptausleger · Flèche principale

SL: Superlift

ZB: Central ballast · Zentralballast · Lest central

[MAIN MENUE](#)

[Inhalt](#)

[Contents](#)

[Contenu](#)

Technical description

Crawler carrier

	3-section carrier comprising of carbody and two crawlers. Hydraulic pin connections between crawlers and carbody provide for easy assembly and removal to minimise width and weight for transportation.
Carbody	Bending- and torsion-resistant welded structure of box type construction, fabricated of high-strength fine-grain structural steel.
Crawlers	Side frames: bending-resistant welded structure of high-strength fine-grain structural steel. Track shoes, idler and drive sprockets are fabricated of heat-treated high-strength cast steel. 15 rollers on each side frame with hardened rolling surfaces. Automatic centralized lubrication is included as standard.
Power train	The tracks are powered by two hydraulic motors each through closed planetary gear reduction units running in oil bath, equipped with spring-applied hydraulically released holding brakes; the gear units are of very compact design to fit within the width of the crawlers. Each crawler is infinitely variable controlled, both independently and in opposite direction.

Superstructure

Counterweight	160 t.
Frame	Torsion-resistant welded structure fabricated of high-strength fine-grain structural steel. Connected to carrier by triple-row roller bearing slew ring.
Drive	DaimlerChrysler diesel engine type OM 502 LA, 380 kW (516 hp) at 2000 ¹ /min, torque 2400 Nm at 1080 ¹ /min. The engine complies with EUROMOT II and EPA 2 regulations. Pump distribution gearbox with five variable displacement axial piston pumps, and gear pumps.
Rope drums	The standard superstructure equipment includes three rope drums – hoist 1, hoist 2 and boom hoist. The drums are powered by hydraulic motors through closed planetary gear units running in oil bath. All rope drums have spring-applied, hydraulically released multi-disk brakes and non-wearing hydraulic braking for load lowering. Rope ends H 1, 2, 3 and W 1, 2 equipped with quick-connect rope end fittings. Hoists H 1 + 2 are removable to minimise weight for transportation.
Slew unit	Powered by hydraulic motor through closed, planetary gear unit running in oil bath. Spring-applied, hydraulically released holding brake and non-wearing hydraulic braking.
Control	Electronic proportional valve pilot-control integrated into stored-program control system with fault-diagnosis. Automatic power control giving optimal utilisation of engine output.
Cabin	Comfortable cab with large windscreen and airconditioner. Safety-glazing all around, roof window, self-contained hot air heater, full instrumentation and crane controls. The cab can be tilted back for improved operator view of boom point. A camera system is installed to monitor the rope drums. For transportation, the cab swings in front of the superstructure to minimise width.
Electrical equipment:	24 V d. c. system.

Optional equipment

Counterweight	20 t on the superstructure (only in conjunction with central ballast).
Central ballast:	60 t.
Hydraulic raising system for A-frame	
Assembly jacks	Four hydraulic jacking cylinders on carbody (folding within 3 m width) for easy assembly of crawlers.
Counterweight carrier	Drive 4 x 4, total weight max. 325 t.
Quick-connection	Hydraulic quick-disconnect fittings on carrier and superstructure facilitate removal to minimise weight for transportation.
Track shoes	2000 mm

Boom configurations S

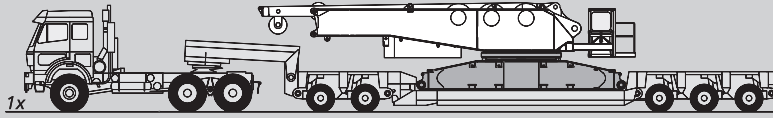
SH:	Main boom: foot section 10.5 m (used to install drums W1/H3), inserts 12 m and 6 m (type 2724) and tapered insert 12 m, head with sheave assembly 600 t 1.5 m. Main boom lengths: 24-84 m.
SSL:	Main boom: same as SH. Mast 30 m, radius 15 m (other radii on request), Superlift counterweight 0-300 t (at 50 t increments). Main boom lengths: 36-84 m.
Safety devices	Electronic safe load indicator, hoist limit switch, limit switches for boom movements, hydraulic boom backstops, anemometer.
Ancillary equipment	
Hoist H3	Additional rope drum on main boom (for LF or runner operation). Line pull same as H1, rope length 650 m.
Reeving winch	mounted on superstructure
Runner	approx. 2 m for installation on boom head or top section (not in conjunction with LF).

Transport example for CC 2800

Transportbeispiel CC 2800

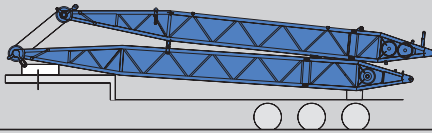
Exemple de transport pour la CC 2800

Load approx. 81 t
Ladung ca. 81 t
Charge environ 81 t



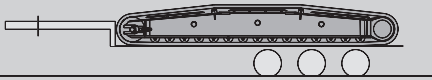
Load approx. 21.1 t
Ladung ca. 21,1 t
Charge environ 21,1 t

1x



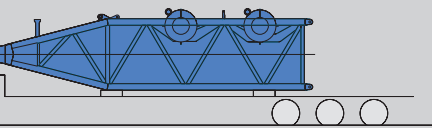
Load 40.3 t
Ladung 40,3 t
Charge 40,3 t

2x



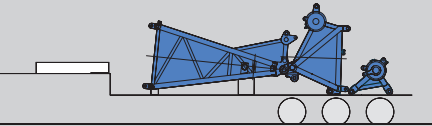
Load 29 t
Ladung 29 t
Charge 29 t

1x



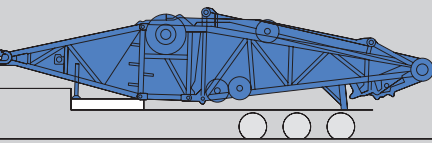
Load 19.5 t
Ladung 19,5 t
Charge 19,5 t

1x



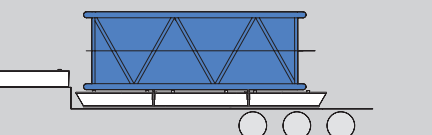
Load 29 t
Ladung 29 t
Charge 29 t

1x



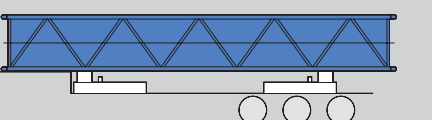
Load 16.1 t
Ladung 16,1 t
Charge 16,1 t

1x



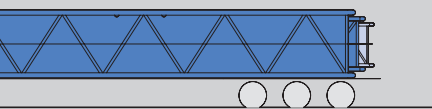
Load 23.7 t
Ladung 23,7 t
Charge 23,7 t

1x



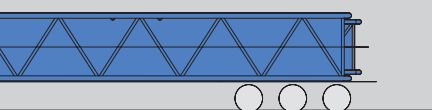
Load 29 t
Ladung 29 t
Charge 29 t

2x



Load 21.8 t
Ladung 21,8 t
Charge 21,8 t

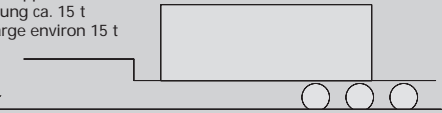
1x



- Superlift counterweight · Superlift-Gegengewicht · Contrepoids Superlift
- Basic crane · Grundgerät · Machine de base
- Boom combination · Auslegerkombination · Combinaison de fleche SWSL 72 + 72 m
- Containers, boxes etc. · Container, Boxen etc. · Conteneurs, boîtes etc.
- Boom combination · Auslegerkombination · Combinaison de fleche LF 36 m
- Low-loader · Tieflader · Semi-remorque

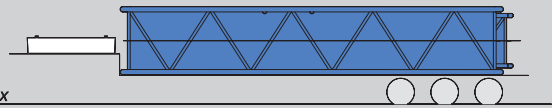
Load approx. 15 t
Ladung ca. 15 t
Charge environ 15 t

1x



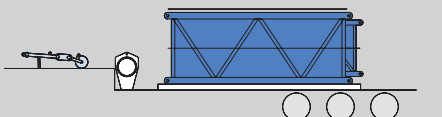
Load 20.8 t
Ladung 20,8 t
Charge 20,8 t

2x



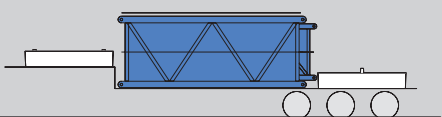
Load 28.4 t
Ladung 28,4 t
Charge 28,4 t

1x



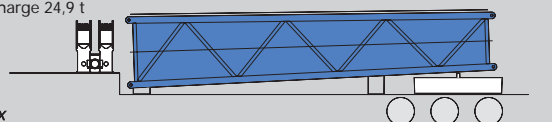
Load 25.7 t
Ladung 25,7 t
Charge 25,7 t

1x



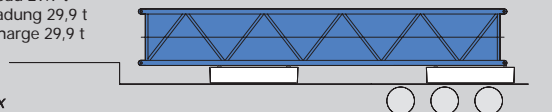
Load 24.9 t
Ladung 24,9 t
Charge 24,9 t

1x



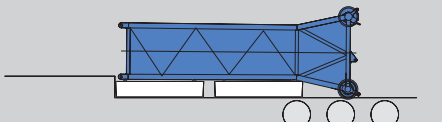
Load 29.9 t
Ladung 29,9 t
Charge 29,9 t

1x



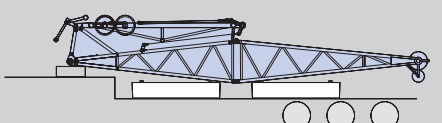
Load 34.3 t
Ladung 34,3 t
Charge 34,3 t

1x



Load 32.8 t
Ladung 32,8 t
Charge 32,8 t

1x



60 t Superlift counterweight can be transported together with the complete SWSL attachment 84 m + 84 m + 36 m LF. Depending on the load case, the remaining 240 t Superlift counterweight and some mats as required, will have to be carried on separate low-loaders.

Mit der gesamten Einrichtung SWSL 84 m + 84 m + 36 m LF lassen sich auch noch 60 t Superlift-Gegengewicht mitnehmen. Je nach Lastfall erfordern die restlichen 240 t Superlift-Gegengewicht sowie einige Unterleg-Matten weitere Tieflader.

60 t de contrepoids Superlift peuvent être transportés avec l'équipement SWSL 84 m + 84 m + 36 m LF tout ensemble. Les 240 t résiduelles du contrepoids Superlift ainsi que quelques plaques de calage, telles que nécessaires en fonction du cas de levage, seront à transporter sur des semi-remorques supplémentaires.

Subject to change without notice! · Änderungen vorbehalten! · Sous réserve de modification!

03/01

MAIN MENUE

Inhalt

Contents

Contenu